

# Noson Croeso – Welcome Evening

## Blwyddyn 1/2 – Year 1/2





Dosbarth Dinas Bran – Mrs Coombes



Dosbarth Criccieth – Mrs Mort



Dosbarth Y Waun– Mrs Speed

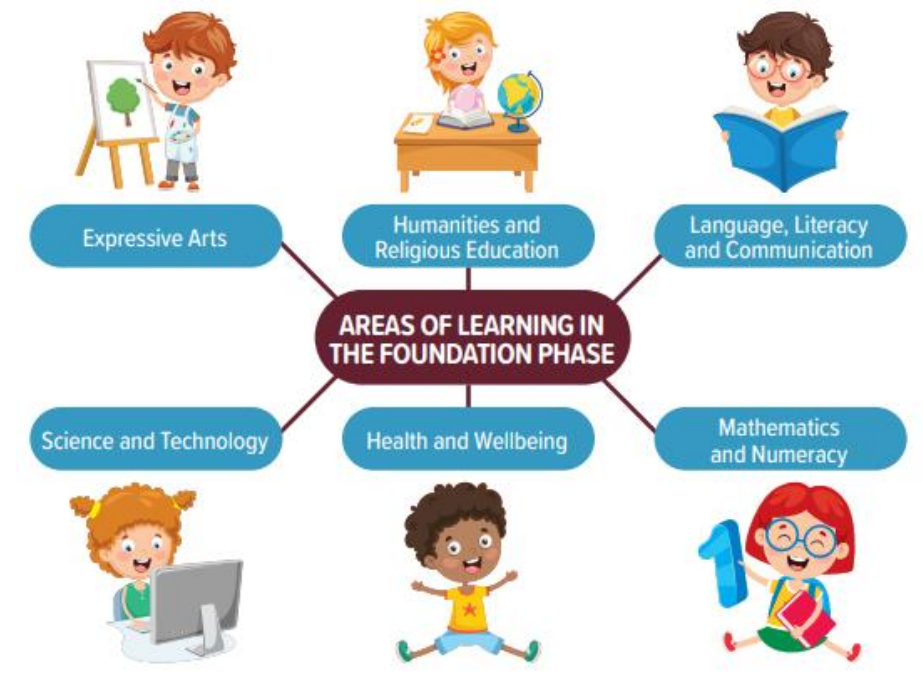


# General Information

- We hope that all children enjoy their time with us and we will do our best to make learning fun for your child. Learning in the foundation phase looks a little different from the early years. We encourage the children to learn through play as well as undertaking more formal learning to prepare them for key stage 2.
- In all of our classrooms we have learning areas to enhance the teaching and learning, we encourage the children to become innovators, inventors, problem solvers and independent learners.







## Our Areas

- Fine motor
- Sand and water
- Role play
- Creative
- Construction
- Loose parts





# What will my child need to bring to school?

- A reading folder is recommended
- A water bottle
- A healthy snack

*Please ensure all items are clearly labelled with your child's name.*



# Guided Reading

- Guided Reading will take place every Tuesday, your child will then bring the book home they have started to read in school. We would like the book to be returned on the following Monday ready for us to change them again on the Tuesday.
- Please take time in the evenings and at weekends to read with your child, this really does help them with all aspects of learning.



# Seesaw

- We are beginning to use Seesaw to share information, work and pictures of your child in school.
- We will also use this app to share information about the school day and upcoming events.
- Please make sure you download the app and join your child's class to share in the fun!
- Please understand that we may not see messages during the school day as we are teaching, if you have an urgent message please contact the school office.





### leithoedd, Llythrennedd a Chyfathrebu / Languages, Literacy and Communication

- Jolly Phonics and Tricky Words
- Focus books – The Way Back Home, Whatever Next!
- Pennals and Guided Reading
- Sentence Writing
- Autobiography/ biography/story writing/ information texts.
- Cymraeg- commands and ourselves

### Mathemateg a Rhifedd / Mathematics and Numeracy

- Place value
- Ordering numbers
- Crossing the 10's barrier
- Counting in tens
- Addition
- Subtraction
- Number bonds
- Shape properties

### Gwyddoniaeth a Thechnoleg / Science and Technology

- Materials and their properties.
- Which is the strongest paper investigation.
- Design a a space craft or space helmet
- Materials matter
- Interacting and collaborating in digital citizenship
- Coding and BeeBots-control
- Creating a video using Adobe Spark.

### Dyniaethau / Humanities

- Local study and class wonder.
- Gresford mining disaster anniversary.
- Where we are in space.
- Who is Paxi? (European Space Agency Mascot)
- Moon landing.
- Planets and their orbits.



Year 1/2

## Blast Off!

The local area/Space



### Addysg Grefyddoll / Religious Education

- Journey of life – life stages and events
- Identity and belonging- communities, contributions, and diversity.

### Y Celfyddydau Mynegiannol / Expressive Arts

- Artist study – Martyn Evans
- Oil pastels and drawing
- 3D art
- Van Gogh-Starry Night
- Collage
- Experimenting with different mediums
- Holst the Planets- ostinato

### Iechyd a Lles / Health and Well-being

- Basketball- exploring the bounce, passing and shooting skills
- Tennis
- Dance
- Football skills
- Gymnastics
- Cardio mini-circuits
- My Happy Minds – Meet the Brain

### Cymraeg / Welsh

- Who we are , where we live and where we go to school.
- Reading about each other for information.
- Commands- eisteddwch, grawdwch, etc.
- Songs with commands

Dilynwch ni ar Twitter a Facebook.  
Follow us on Twitter and Facebook.  
@AllSaintsCIW





# Helping at home

- Regular reading, aiming for at least 3 times a week in a relaxed environment.
- Focus on spelling and reading of high frequency words.
- Helping the children to learn number bonds to 10 and 20.
- Helping children to learn the 2, 5 and 10 times tables.
- Allowing children to recognize numbers, pay for items with coins and help them to tell the time, all real-life experiences.
- Giving the children time outside to explore, relax and enjoy the world around them, they work hard all day!



# Important Contact Details

- Main School Office phone number – 01978 852342
- Main School Office email – [mailbox@allsaints-pri.Wrexham.sch.uk](mailto:mailbox@allsaints-pri.Wrexham.sch.uk)
- Absence reporting phone number – 01978 852342
- Absence reporting email – [attendance@allsaints-pri.Wrexham.sch.uk](mailto:attendance@allsaints-pri.Wrexham.sch.uk)
- Childcare email – [childcare@allsaints-pri.Wrexham.sch.uk](mailto:childcare@allsaints-pri.Wrexham.sch.uk)

*An answerphone service is in place for when the school office is closed.*

